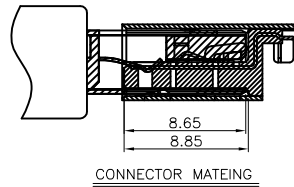
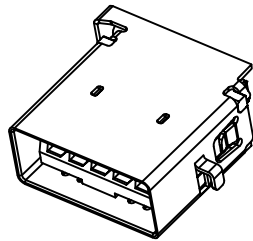
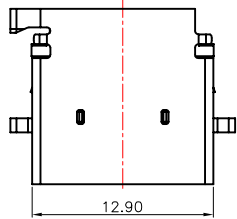


RoHS Compliant

REV.	DESCRIPTION	SIGN	DATE
A	NEW	Fred.Tong	17/06/20
B	插拔力标准变更为8-25N	Fred.Tong	19/01/06



NOTES:

1.ELECTRONIC:

CONTACT CURRENT RATING:1.5A
 CONTACT RESISTANCE: 30mohm MAX
 INSULATION RESISTANCE: 1000 Mohm MIN
 WITHSTAND VOLTAGE:AC 500V,1min.

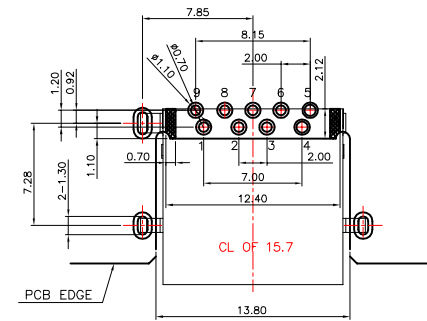
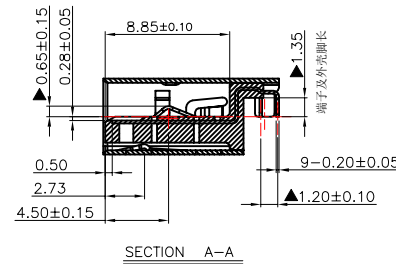
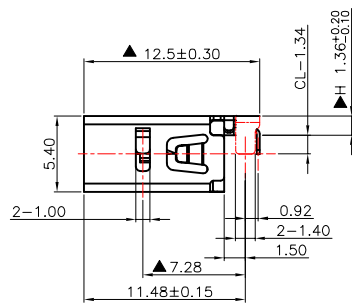
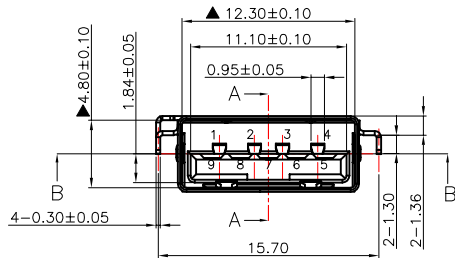
2.MECHANICAL:

▲ MATING FORCE:25N MAX
 ▲ UNMATED FORCE:8-25N.

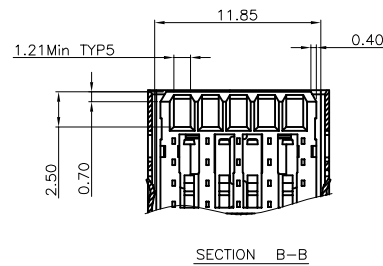
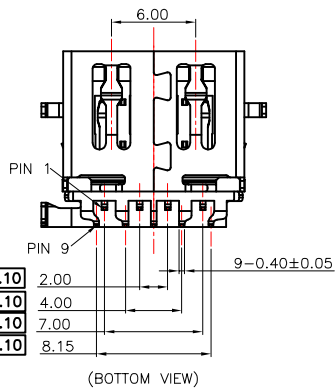
3.ENVIRONMENT CHARACTERISTICS:

OPERTING TEMPERATURE:-55°C TO +105°C

4.标示”▲”符号的尺寸为重点检验尺寸。



TOLERANCE: ±0.05, THICKNESS: 1.0~1.2mm
 RECOMMENDED PCB LAYOUT
 (TOP VIEW)
 KEEP OUT AREA



⌀0.10	2.00
⌀0.10	4.00
⌀0.10	7.00
⌀0.10	8.15

3	SHELL	1	SUS201 T=0.3mm	NI PLATED
2	CONTACT	9	COPPER ALLOY T=0.2mm	AU/TIN PLATED
1	HOUSING	1	(PA9T)THERMOPLASTIC	(UL 94V-0) BLUE/BLACK
No.	PART NAME	QTY	MATERIAL	REMARK

GENERAL TOLERANCES (UNLESS SPECIFIED)			DRAWN BY: Alen.Yu		DATE: 17/06/20		TEL: +86 0755 27801940 Mob: +86 15889397634 www.techedom.com	
ITEM	MM	INCH	CHECKED BY	DATE		TITLE: USB3.0 AF R&A DIP RVS 少右脚 L12.50		
3 PLACE	±0.15	±0.005	APPROVED BY	DATE				
2 PLACE	0.25	±0.01	ANGLE OF PROJECTION			SIZE	PART NO.	
1 PLACE	±0.35	±0.015	ANGULAR ± 3°			A4	EU09FL1N12156	
0 PLACE	±0.50	±0.02				METRIC	U.S.	SCALE
THIS DRAWING CONTAINS INFORMATION THAT IS PROPRIETARY TO EDOM INCORPORATED AND SHOULD NOT BE USE WITHOUT WRITTEN PERMISSION								REV. B