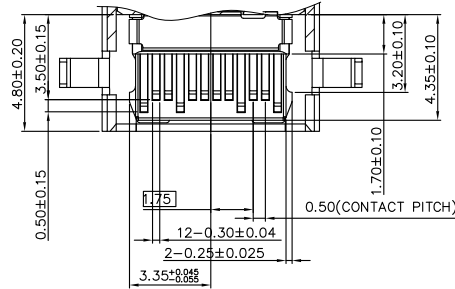
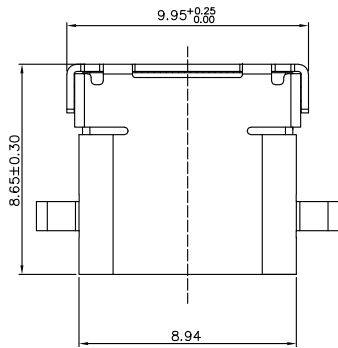


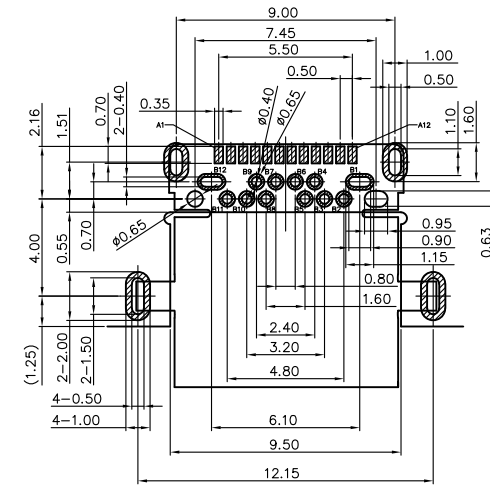
RoHS Compliant

REV.	DESCRIPTION	SIGN	DATE
A	NEW	Fred.Tong	17/06/15

A

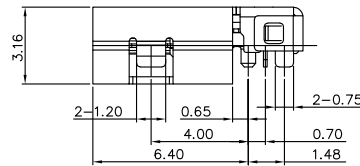
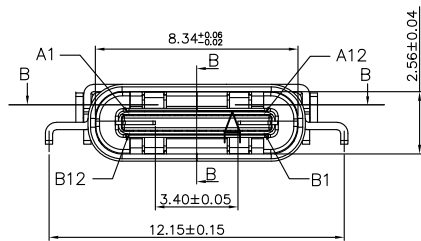


SECTION B-B
SCALE 1:1

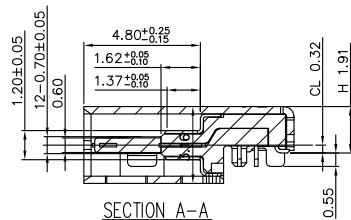


RECOMMENDED P.C.B. LAYOUT

B



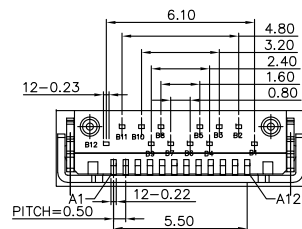
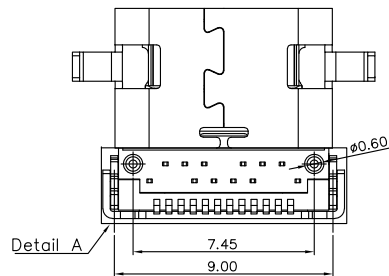
C



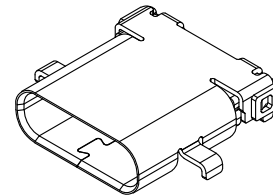
SECTION A-A
SCALE 1:1

- ELECTRICAL:
 - CURRENT: 5A MIN FOR VBUS;
0.25A MIN FOR OTHER.
 - VOLTAGE: 5VAC MAX
 - WITHSTANDING VOLTAGE: 100V AC.
 - CONTACT RESISTANCE: 40mΩ MAX.
 - INSULATION RESISTANCE: 100MΩ MIN.
- MECHANICAL:
 - INSERTION: 5~20N.
 - EXTRACTION: 8~20N.
 - DURABILITY: 10000 CYCLES
- ENVIRONMENTAL
 - TEMPERATURE RANGE -55° C ~ +85° C

D



Detail A



4. MATERIAL LIST:

No.	PART NAME	QTY	MATERIAL	REMARK
4	MID PLATE	1	STAINLESS STEEL	NI PLATED
3	SHELL	1	STAINLESS STEEL	NI PLATED
2	CONTACT	24	COPPER ALLOY	GOLD PLATED
1	HOUSING	1	THERMOPLASTIC(LCP)	(UL 94V-0)

GENERAL TOLERANCES (UNLESS SPECIFIED)			DRAWN BY	DATE
3 PLACE	±0.15	±0.005	Alen.Yu	17/06/15
2 PLACE	±0.25	±0.01	Fred.Tong	17/06/15
1 PLACE	±0.35	±0.015		
0 PLACE	±0.50	±0.02		

EDOM ELECTRONICS TEL: +86 0755 27801940
Mob: +86 15889397634
www.techedom.com

TITLE: **USB3.1 C TYPE FEMALE R&A SMT&DIP H1.91MM L8.65**

ANGULAR ± 3°		ANGLE OF PROJECTION
METRIC	U.S.	
MM	INCHES	

SIZE	PART NO.
A4	EU24FB3N11216
SCALE	N/A
SHEET 1 OF 1	

THIS DRAWING CONTAINS INFORMATION THAT IS PROPRIETARY TO EDOM INCORPORATED AND SHOULD NOT BE USE WITHOUT WRITTEN PERMISSION

REV. A