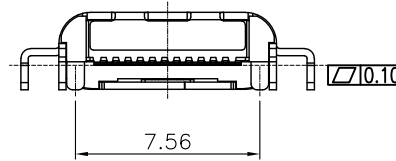
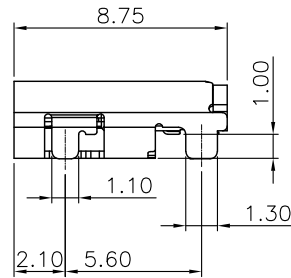
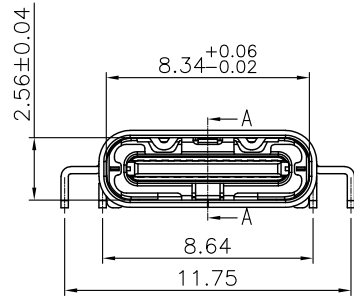
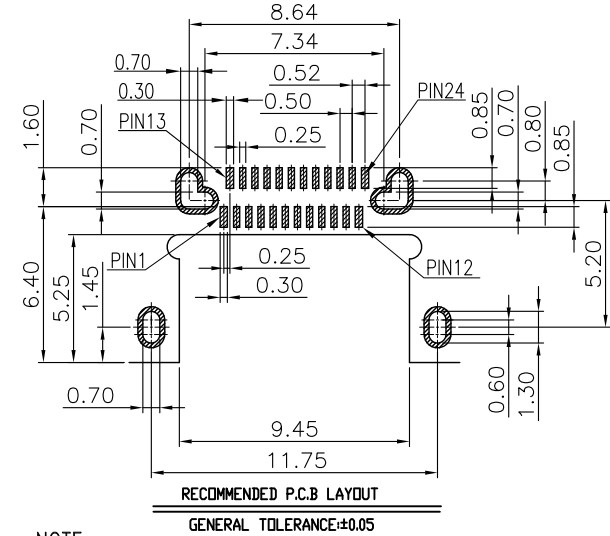
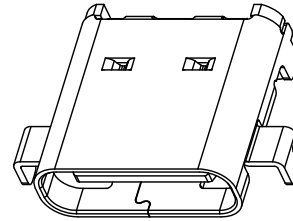
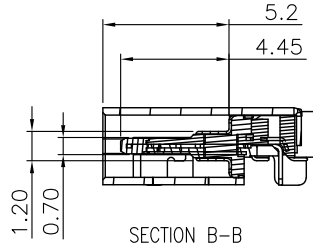
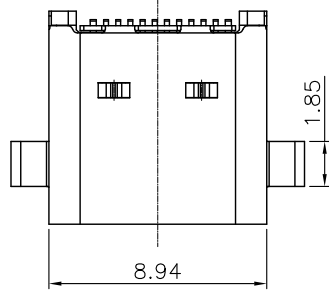


RoHS Compliant

REV.	DESCRIPTION	SIGN	DATE
A	NEW	Fred.Tong	18/12/15

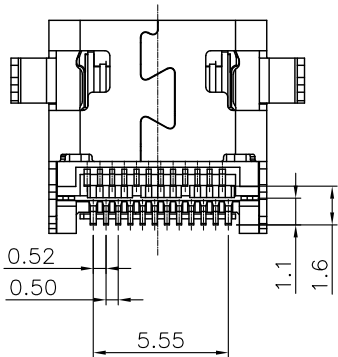


NOTE:

- ELECTRICAL CHARACTERISTICS;
 - VOLTAGE RATING:100 VAC RMS
 - CURRENT RATING:3A FOR PIN(A4,A9,B4,B9), 1.25A FOR OTHERS PIN
 - CONTACT RESISTANCE:40 MILLIOHMS MAX
 - INSULATION RESISTANCE:100 MEGOHMS MIN
 - DIELECTRIC STRENGTH:100V AC RMS 50Hz.1MIN
- ENVIRONMENTAL:
 - TEMPERATURE RANGE:-40°C +85°C
 - RELATIVE HUMIDITY:90 95%(40±2°C)

3.MATERIAL LIST:

No.	PART NAME	QTY	MATERIAL	REMARK
5	EMC	1	STAINLESS STEEL	NO PLATED
4	MID PLATE	1	STAINLESS STEEL	NO PLATED
3	SHELL	1	STAINLESS STEEL	NI PLATED
2	CONTACT	24	COPPER ALLOY	GOLD PLATED
1	HOUSING	1	THERMOPLASTIC	(UL 94V-0)



A1	GND	B12	GND
A2	SSTXP1	B11	SSRXP1
A3	SSTXN1	B10	SSRXN1
A4	VBUS	B9	VBUS
A5	CC1	B8	SBU2
A6	DP1	B7	DN2
A7	DN1	B6	DP2
A8	SBU1	B5	CC2
A9	VBUS	B4	VBUS
A10	SSRXN2	B3	SSTXN2
A11	SSRXP2	B2	SSTXP2
A12	GND	B1	GND
PIN	SIGNAL NAME	PIN	SIGNAL NAME

GENERAL TOLERANCES (UNLESS SPECIFIED)		DRAWN BY Alen.Yu	DATE 18/12/15	TEL: +86 0755 27801940 Mob: +86 15889397634 www.techedom.com	
ITEM	MM	INCH	CHECKED BY Liang.Li		DATE 18/12/15
3 PLACE	±0.15	±0.005	APPROVED BY Fred.Tong		TITLE: USB C TYPE 3.1沉板1.0双贴母座 短体(L=8.75)
2 PLACE	±0.25	±0.01	DATE 18/12/15		
1 PLACE	±0.35	±0.015	DATE 18/12/15		SIZE A4
0 PLACE	±0.50	±0.02	ANGLE OF PROJECTION ANGULAR ± 3°		PART NO. EU24FB3N11305
METRIC		U.S.		SCALE N/A	
MM		INCHES		SHEET 1 OF 1	
THIS DRAWING CONTAINS INFORMATION THAT IS PROPRIETARY TO EDOM INCORPORATED AND SHOULD NOT BE USE WITHOUT WRITTEN PERMISSION					REV. A