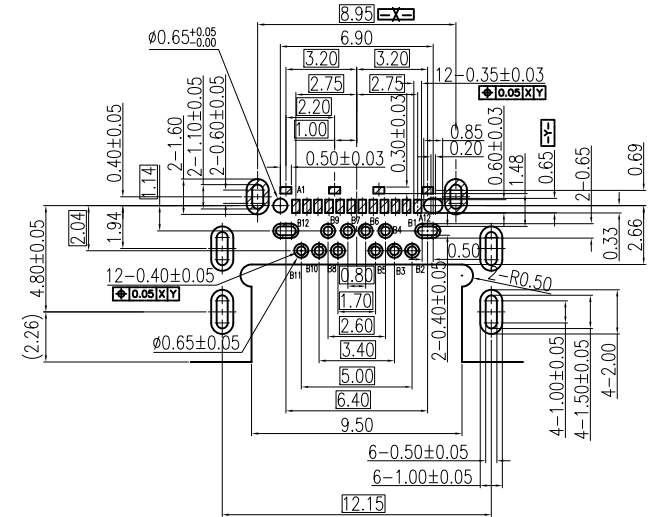
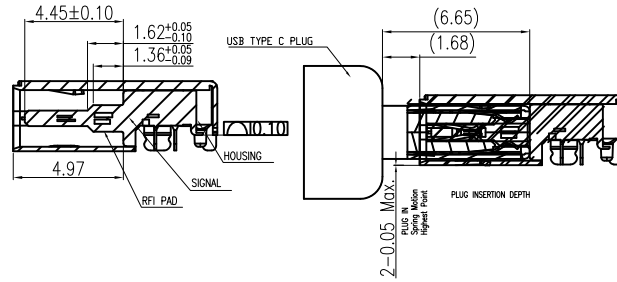
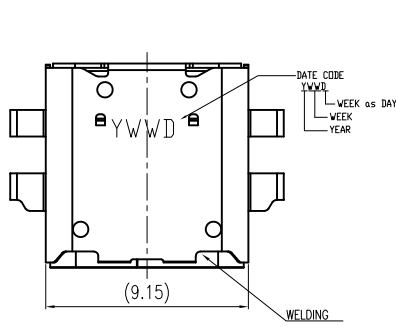


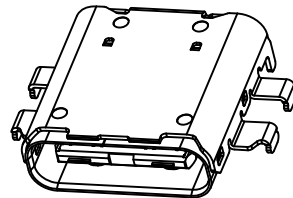
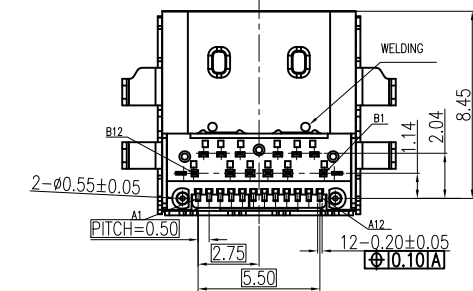
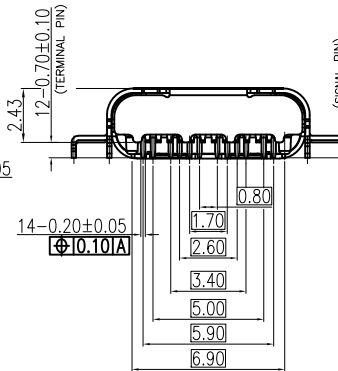
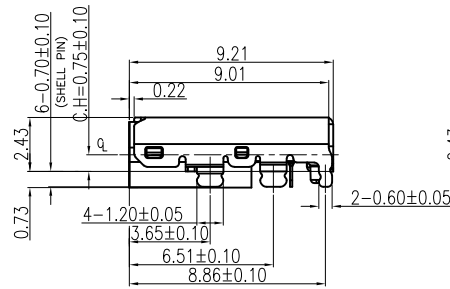
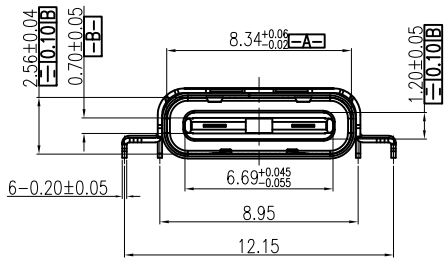
RoHS Compliant

REV.	DESCRIPTION	SIGN	DATE
A	NEW	Fred.Tong	18/12/15



RECOMMENDED P.C.B LAYOUT
GENERAL TOLERANCE:±0.05

- NOTE:
- ELECTRICAL CHARACTERISTICS;
 - VOLTAGE RATING:100 VAC RMS
 - CURRENT RATING:3A FOR PIN(A4,A9,B4,B9), 1.25A FOR OTHERS PIN
 - CONTACT RESISTANCE:40 MILLIOHMS MAX
 - INSULATION RESISTANCE:100 MEGOHMS MIN
 - DIELECTRIC STRENGTH:100V AC RMS 50Hz.1MIN
- 2 ENVIRONMENTAL:
- TEMPERATURE RANGE:-40°C +85°C
 - RELATIVE HUMIDITY:90 95%(40±2°C)
- 3.MATERIAL LIST:



A1	GND	B12	GND
A2	SSTXP1	B11	SSRXP1
A3	SSTXN1	B10	SSRXN1
A4	VBUS	B9	VBUS
A5	CC1	B8	SBU2
A6	DP1	B7	DN2
A7	DN1	B6	DP2
A8	SBU1	B5	CC2
A9	VBUS	B4	VBUS
A10	SSRXN2	B3	SSTXN2
A11	SSRXP2	B2	SSTXP2
A12	GND	B1	GND
PIN	SIGNAL NAME	PIN	SIGNAL NAME

5	EMC	1	STAINLESS STEEL	NO PLATED
4	MID PLATE	1	STAINLESS STEEL	NO PLATED
3	SHELL	1	STAINLESS STEEL	NI PLATED
2	CONTACT	24	COPPER ALLOY	GOLD PLATED
1	HOUSING	1	THERMOPLASTIC	(UL 94V-0)
No.	PART NAME	QTY	MATERIAL	REMARK

GENERAL TOLERANCES (UNLESS SPECIFIED)			DRAWN BY	DATE
ITEM	MM	INCH	Alen.Yu	18/12/15
3 PLACE	±0.15	±0.005	CHECKED BY	DATE
2 PLACE	±0.25	±0.01	Liang.Li	18/12/15
1 PLACE	±0.35	±0.015	APPROVED BY	DATE
0 PLACE	±0.50	±0.02	Fred.Tong	18/12/15

EDOM ELECTRONICS TEL: +86 0755 27801940
Mob: +86 15889397634
www.techedom.com

TITLE:
USB C TYPE 沉板CH0.75 前插后贴 L9.21

ANGULAR ± 3°		ANGLE OF PROJECTION
METRIC	U.S.	
MM	INCHES	

SIZE	PART NO.	
A4	EU24F2B3N11339SR	
SCALE	N/A	SHEET 1 OF 1

THIS DRAWING CONTAINS INFORMATION THAT IS PROPRIETARY TO EDOM INCORPORATED AND SHOULD NOT BE USE WITHOUT WRITTEN PERMISSION

REV. A