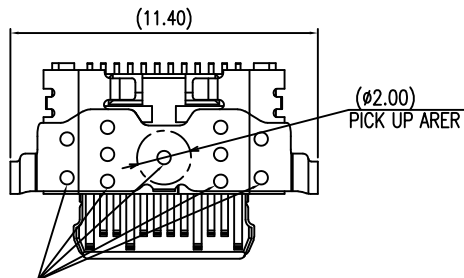
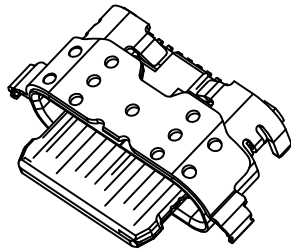
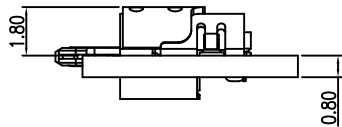


**RoHS Compliant**

REV.	DESCRIPTION	SIGN	DATE
A	NEW	qinyu	2021/03/23



Welding spot: Height < 0.05mm, Pulling force > 50N.

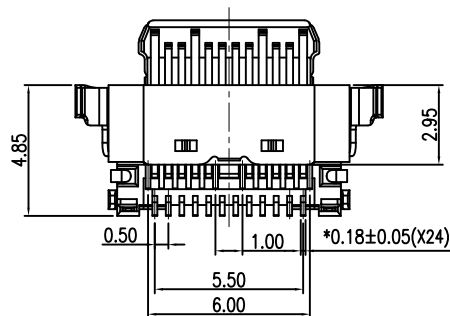
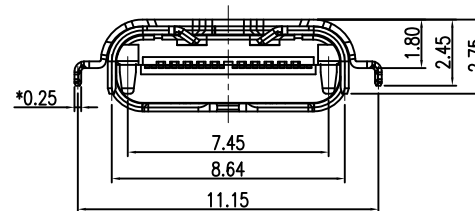
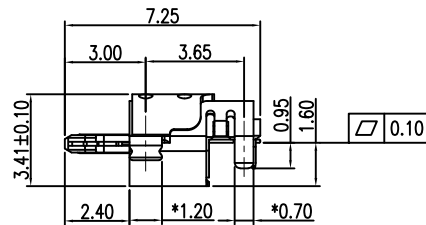
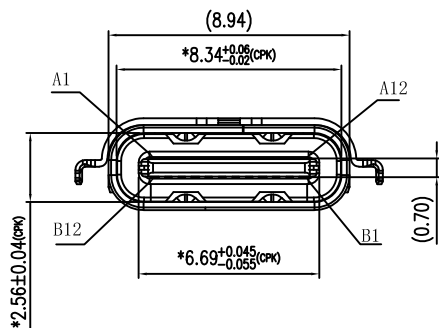



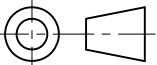
MOUNTING CONDITION (REF.)

**NOTES:**

**1.PRODUCT SPECIFICATIONS:**

- 1.1. CURRENT RATING: 1.5A/PIN MAX(A4,A9,B4,B9)  
1.25A/PIN MAX(A1,A12,B1,B12),0.25A(OHER PIN)
- 1.2. TEMPERATURE RANGE: -40 °C ~ 85 °C
- 1.3. CONTACT RESISTANCE: 30 MILLIONHM MAX
- 1.4. INSULATION RESISTANCE: 100 MEGOHMS MIN.
- 1.5. DIELECTRIC WITHSTANDING VOLTAGE:100 VAC
- 1.6. PULG INSERTION DIRECTION WITHSTANDS  
INSERTION FORCE >13.6Kg
- 1.7. INSERTION FORCE : 5N~20N
- 1.8. UNMATING FORCE:INITIAL:8N~20N;DURABILITY:6N~20N
- 1.9. DURABILITY: 10,000 CYCLES



GENERAL TOLERANCES (UNLESS SPECIFIED)			DRAWN BY	DATE	 TEL: +86 0755 27801940 Mob: +86 15889397634 www.techedom.com
ITEM	MM	INCH	qinyu	2021/03/23	
3 PLACE	±0.05	±0.005	CHECKED BY	DATE	<b>TITLE:</b> TYPE C FEMALE 24PIN 双贴SMT 平口沉板1.60 舌片外露2.40MM
2 PLACE	±0.10	±0.01	APPROVED BY	DATE	
1 PLACE	±0.20	±0.015	ANGLE OF PROJECTION 		
0 PLACE	±0.30	±0.02	SIZE	PART NO.	
ANGULAR ± 2°			SCALE	N/A	SHEEL 1 OF 1
METRIC	U.S.				
MM	INCHES				

THIS DRAWING CONTAINS INFORMATION THAT IS PROPRIETARY TO EDOM INCORPORATED AND SHOULD NOT BE USE WITHOUT WRITTEN PERMISSION

REV.  
A

