

RoHS Compliant

REV.	DESCRIPTION	SIGN	DATE
A	NEW	QinYu	20/07/01

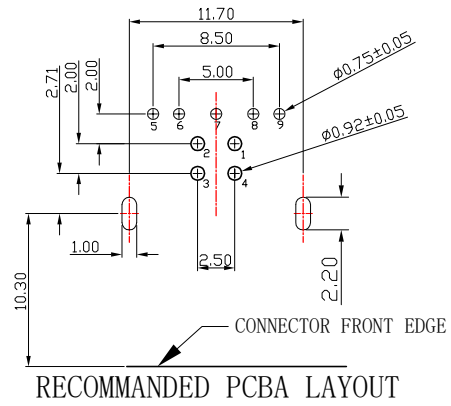
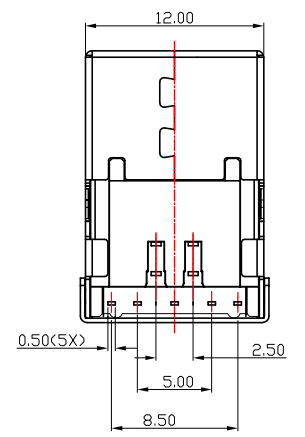
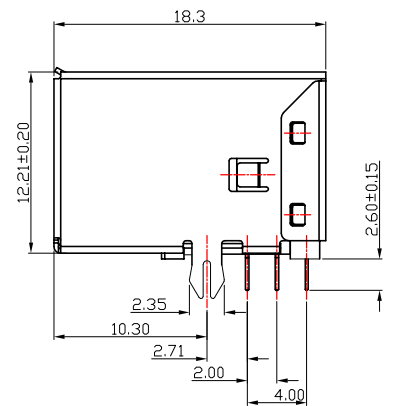
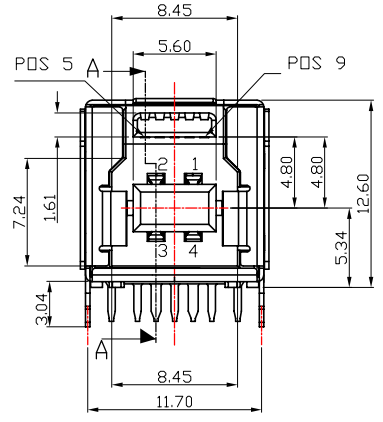
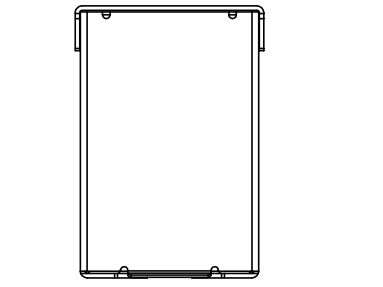
NOTES:

- ELECTRONIC:**
CONTACT RESISTANCE: 30mohm MAX
INSULATION RESISTANCE: 1000 Mohm MIN
WITHSTAND VOLTAGE:AC 500V,1min.
- MECHANICAL:**
DURABILITY: 1500 CYCLE.
- ENVIRONMENT CHARACTERISTICS:**
OPERTING TEMPERATURE:-55°C TO +105°C
- RECOMMANDER PCB THICKNESS 1.2 TO 1.60MM**
- PART NO:**

EU 09 F L 1 N 5 2 00


09 9PIN
 F: FEMALE
 M: MALE
 HOUSNIG COLORE
 L: BLUE
 B: BLACK
 SHELL MATERIAL
 1: CU
 2: SHEEL

RUNNING NO
 SOLDER TYPE
 1: SMT TYPE
 2: DIP TYPE
 CONTACT PLATED
 1: GOLD FLASH
 2: 1U
 5: 15U
 SHELL PLATED
 A: AU
 N: NI



5	SHELL	1	SPCC T=0.25	NI PLATED
4	5PIN	5	COPPER ALLOY	30U AU/TIN PLATED
3	4PIN	4	PHOSPHOR BRONZE	30U AU/TIN PLATED
2	COVER	1	THERMOPLASTIC (PBT无卤)	(UL94V-0) BLUE(300C)
1	HOUSING	1	THERMOPLASTIC (PBT无卤)	(UL94V-0) BLUE(300C)
No.	PART NAME	QTY	MATERIAL	REMARK

GENERAL TOLERANCES (UNLESS SPECIFIED)		DRAWN BY	DATE
3 PLACE	±0.15 ±0.005	QinYu	20/07/01
2 PLACE	±0.25 ±0.01	ROGER	20/07/01
1 PLACE	±0.35 ±0.015	Fred. Tong	20/07/01
0 PLACE	±0.50 ±0.02		
ANGULAR ± 2°		APPROVED BY	
METRIC	U.S.	Fred. Tong	
MM	INCHES		

		TEL: +86 0755 27801940 Mob: +86 15889397634 www.techedom.com
TITLE: USB3.0 B/T FEMALE 90度 DIP 带鱼叉 端子脚长2.60MM		
SIZE A4	PART NO. EU09F1L2N1285H	
SCALE N/A	SHEET 1 OF 1	

THIS DRAWING CONTAINS INFORMATION THAT IS PROPRIETARY TO EDOM INCORPORATED AND SHOULD NOT BE USE WITHOUT WRITTEN PERMISSION

REV. A