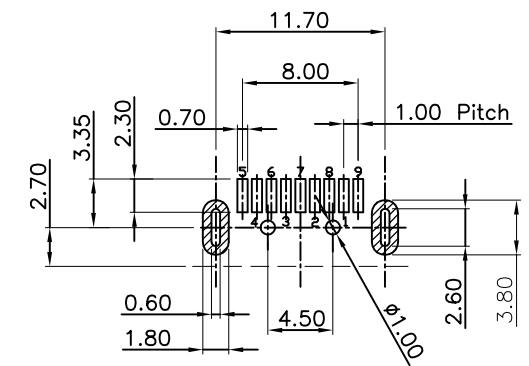
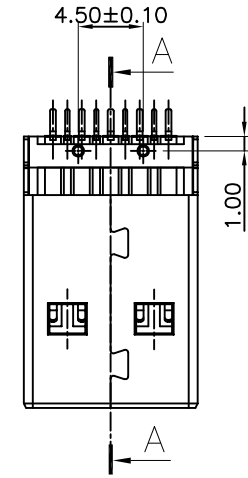
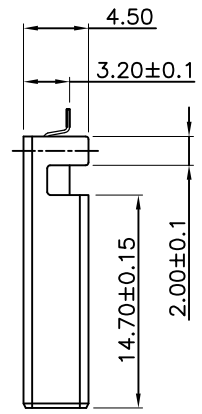
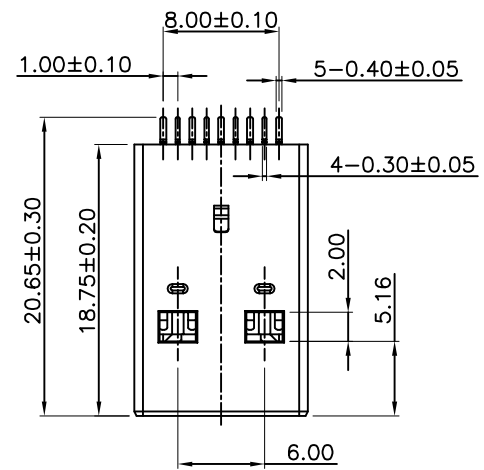
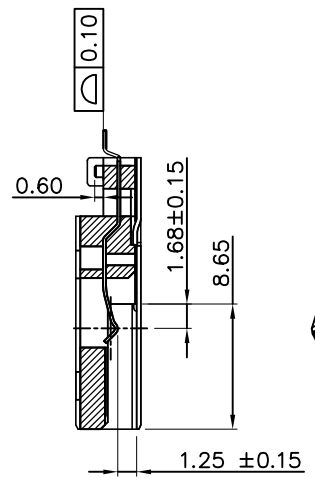
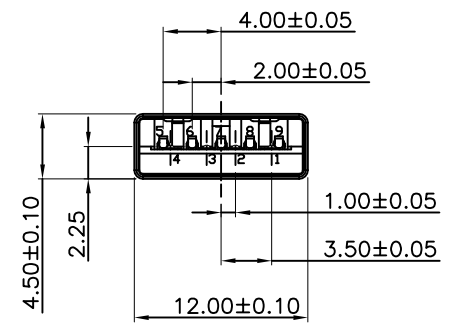


RoHS Compliant

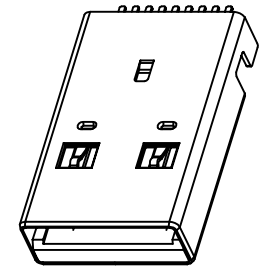
REV.	DESCRIPTION	SIGN	DATE
A	NEW	Fred.Tong	16/06/18



RECOMMENDED PCB LAYOUT



SECTION "A-A"


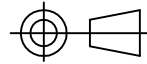


NOTES:

- 1.ELECTRONIC:
CONTACT RESISTANCE: 30mohm MAX
INSULATION RESISTANCE: 1000 Mohm MIN
WITHSTAND VOLTAGE:AC 500V,1min.
- 2.MECHANICAL:
DURABILITY: 1500 CYCLE.
- 3.ENVIRONMENT CHARACTERISTICS:
OPERTING TEMPERATURE:-55°C TO +105°C

4.MATERIAL LIST:

3	SHELL	1	SPCC	NI PLATED
2	CONTACT	9	COPPER ALLOY	AU/TIN PLATED
1	HOUSING	1	LCP BLUE	(UL 94V-0)
No.	PART NAME	QTY	MATERIAL	REMARK

GENERAL TOLERANCES (UNLESS SPECIFIED)			DRAWN BY Alen.Yu	DATE 16/06/18	 TEL: +86 0755 27801940 Mob: +86 15889397634 www.techedom.com
ITEM	MM	INCH	CHECKED BY Liang.Li	DATE 16/06/18	
3 PLACE	±0.15	±0.005	APPROVED BY Fred.Tong	DATE 16/06/18	TITLE: USB3.0 A公 沉板 H3.20 L18.75 SMT 有柱
2 PLACE	±0.25	±0.01	ANGLE OF PROJECTION		SIZE A4
1 PLACE	±0.35	±0.015			PART NO. EU09M2L2N1196
0 PLACE	±0.50	±0.02			SCALE 2:1

THIS DRAWING CONTAINS INFORMATION THAT IS PROPRIETARY TO EDOM INCORPORATED AND SHOULD NOT BE USE WITHOUT WRITTEN PERMISSION

REV. A