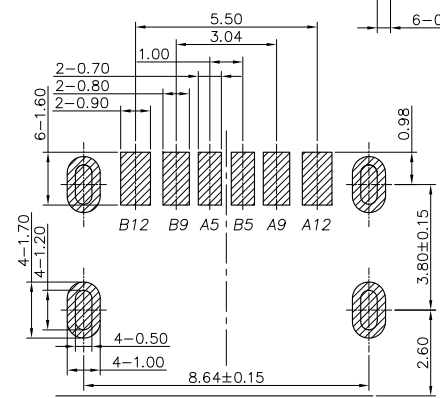
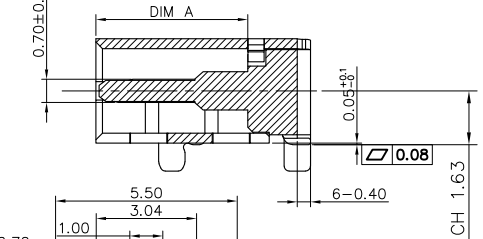
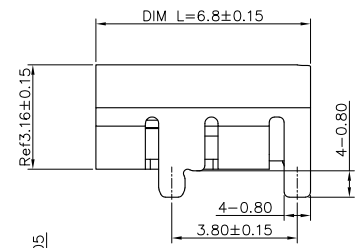
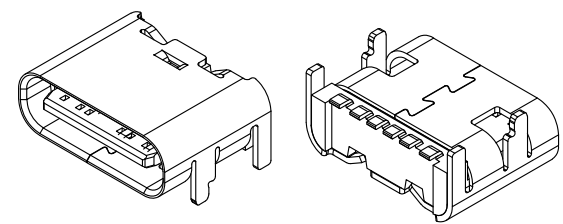
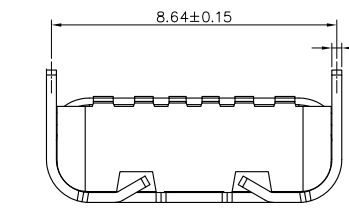
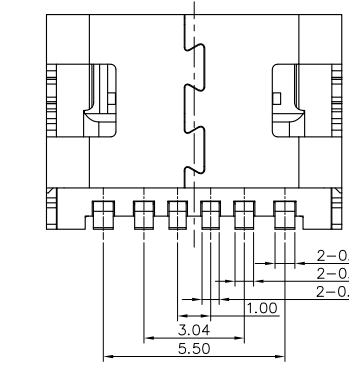
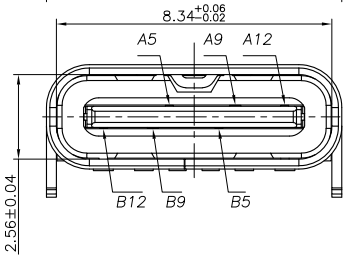
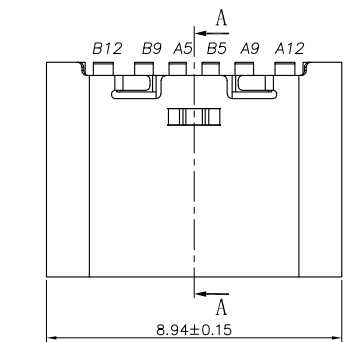


RoHS Compliant

REV.	DESCRIPTION	SIGN	DATE
A	NEW	Fred.Tong	2017/09/15



RECOMMEND P.C.B LAYOUT (COMPONENT SIDE)
TOLERANCE FOR PCB LAYOUT IS ± 0.05

NOTE:

1. MATERIAL SPECIFICATION:
 1. HOUSING: HIGH TEMPERATURE RESISTANT PLASTIC, UL94 V-0.
 2. CONTACTS: COPPER ALLOY
2. PLATING SPECIFICATION:
 - 2-1. CONTACTS:
 - NI 50u" MIN. UNDER PLATED OVER ALL.
 - Au PLATED ON THE FUNCTIONAL AREA OF CONTACT.
 - (GOLD PLATING THICKNESS FOLLOW THE P/N)
 - GOLD FLASH PLATING ON SOLDER AREA
- 2-2. FRONT SHELL:
 - NI 30u" MIN. UNDER PLATED OVER ALL.
3. MECHANICAL PERFORMANCE:
 - 3-1. INSERTION FORCE: 0.5~2.0kgf.
 - 3-2. REMOVAL FORCE: 0.8kgf~2.0kgf.
 - 3-3. DURABILITY: 3000 CYCLES.
4. ELECTRICAL PERFORMANCE:
 - 4-1. CURRENT RATING: 5.0A
 - VOLTAGE RATING: 20V
 - 4-2. INSULATION RESISTANCE: 100MΩ MIN
 - 4-3. DIELECTRIC WITHSTAND VOLTAGE, AC 100V FOR 1 MINUTE.
 - 4-4. LOW CONTACT RESISTANCE: INITIAL 40MΩ /AFTER 50MΩ
5. ENVIRONMENTAL PERFORMANCE:
 - OPERATING TEMPERATURE: -30°C~+80°C.
6. IR REFLOW:
 - THE PEAK TEMPERATURE ON THE BOARD SHALL BE MAINTAINED FOR 10 SECONDS AT 260°C.

USB TYPE-C PIN ASSIGNMENTS

PIN NUMBER	SIGNAL NAME
A5	CC1
A9	VBUS
A12	GND
B12	GND
B9	VBUS
B5	CC2

GENERAL TOLERANCES (UNLESS SPECIFIED)			DRAWN BY	DATE
ITEM	MM	INCH	RuoBiaoLing	2017/09/15
3 PLACE	±0.15	±0.005	CHECKED BY	DATE
2 PLACE	±0.25	±0.01	/	/
1 PLACE	±0.35	±0.015	APPROVED BY	DATE
0 PLACE	±0.50	±0.02	Fred.Tong	2017/09/15
ANGULAR ± 3°			ANGLE OF PROJECTION	
METRIC	U.S.			
MM	INCHES			


 TEL: +86 0755 27801940
 Mob: +86 15889397634
 www.techedom.com

TITLE: USB TYPE CF 6P 板上SMT

SIZE A4	PART NO.
SCALE	EU06FB3N11318SR
N/A	SHEET 1 OF 1

THIS DRAWING CONTAINS INFORMATION THAT IS PROPRIETARY TO EDOM INCORPORATED AND SHOULD NOT BE USE WITHOUT WRITTEN PERMISSION

REV. A